

Medium

## PACCO S3S LOW TLS

PACCOS3LT

**Wide-Fit Low-Cut Safety Sneaker**

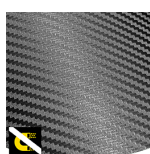
PACCO S3 lightweight, metalfree safety shoes with wide composite toe, punctureresistant midsole, ESD, waterresistant comfort and TLS easy closure.

Upper	Synthetic Leather
Lining	Mesh
Footbed	SJ Memory foam footbed
Midsole	Anti-puncture Textile
Outsole	Phylon/Rubber (NBR)
Toecap	Composite
Category	S3S / SR, SC, ESD, HI, CI, FO, HRO
Size range	EU 35-48 / UK 3.0-13.0 / US 3.0-13.5 JPN 21.5-31.5 / KOR 230-315
Sample weight	0.517 kg
Norms	ASTM F2413:2018 EN ISO 20345:2022+A1:2024



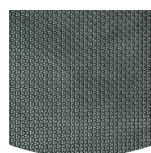
### TLS (Twist Lock System)

Safety Jogger's innovative TLS closure allows you to quickly tighten and loosen your safety footwear with one hand and under any conditions, even when you are wearing safety gloves. TLS ensures a fast, safe and easy precision fit that offers enhanced comfort and enables you to perform at your best.



### Metal free

Metal free safety shoes are in general lighter than regular safety shoes. They are also very beneficial for professionals who have to pass through metal detectors several times a day.



### Rubber outsole

Rubber outsoles provide versatile functions that make them suitable for many areas of application: excellent cut resistance, heat and cold resistance, high flexibility at cold temperatures, resistance against oil, fuel and many chemicals.



### Heel energy absorption

Heel energy absorption reduces the impact of jumps or running on the body of the wearer.



### Puncture resistant lightweight

Metal free, super flexible and ultralight puncture resistant midsole. Covers 100% of the bottom area of the last, no thermal conductivity.



### S3

S3 safety shoes are suitable for work in an environment with high humidity and presence of oil or hydrocarbons. These shoes also protect against perforation risk of the sole, and foot crushing.



BLK

Industries:

Assembly, Automotive, Catering, Cleaning, Industry, Logistics

Environments:

Dry environment, Wet environment, Extreme slippery surfaces

Maintenance instructions:

To extend the life of your shoes, we recommend to clean them regularly and to protect them with adequate products. Do not dry your shoes on a radiator, nor nearby a heat source.

	Description	Measure unit	Result	EN ISO 20345
Upper	Synthetic Leather			
	Upper: permeability to water vapor	mg/cm² /h	4.32	≥ 0.8
	Upper: water vapor coefficient	mg/cm²	37	≥ 15
Lining	Mesh			
	Lining: permeability to water vapor	mg/cm² /h	86.31	≥ 2
	Lining: water vapor coefficient	mg/cm²	691	≥ 20
Footbed	SJ Memory foam footbed			
	Footbed: abrasion resistance (dry/wet) (cycles)	cycles	Dry 25600 cycles/Wet 12800 cycles	25600/12800
Outsole	Phylon/Rubber (NBR)			
	Outsole abrasion resistance (volume loss)	mm³	128	≤ 150
	Basic Slip resistance - Ceramic + NaLS - Forward heel slip	friction	0.43	≥ 0.31
	Basic Slip resistance - Ceramic + NaLS - Backward forepart slip	friction	0.44	≥ 0.36
	SR Slip resistance - Ceramic + glycerin - Forward heel slip	friction	0.36	≥ 0.19
	SR Slip resistance - Ceramic + glycerin - Backward forepart slip	friction	0.33	≥ 0.22
	Antistatic value	MegaOhm	37.2	0.1 - 1000
	ESD value	MegaOhm	33	0.1 - 100
	Heel energy absorption	J	30	≥ 20
Toecap	Composite			
	Impact resistance toecap (clearance after impact 100J)	mm	NA	N/A
	Compression resistance toecap (clearance after compression 10kN)	mm	NA	N/A
	Impact resistance toecap (clearance after impact 200J)	mm	18.5	≥ 14
	Compression resistance toecap (clearance after compression 15kN)	mm	23.5	≥ 14

Sample size:

Our shoes are constantly evolving, the technical data above may change. All product names and brand Safety Jogger, are registered and may not be used or reproduced in any format, without written consent from us.



HEAD-TO-TOE  
PROTECTION



Proudly ranked in the  
top 1% by EcoVadis  
for sustainability.



www.safetyjogger.com